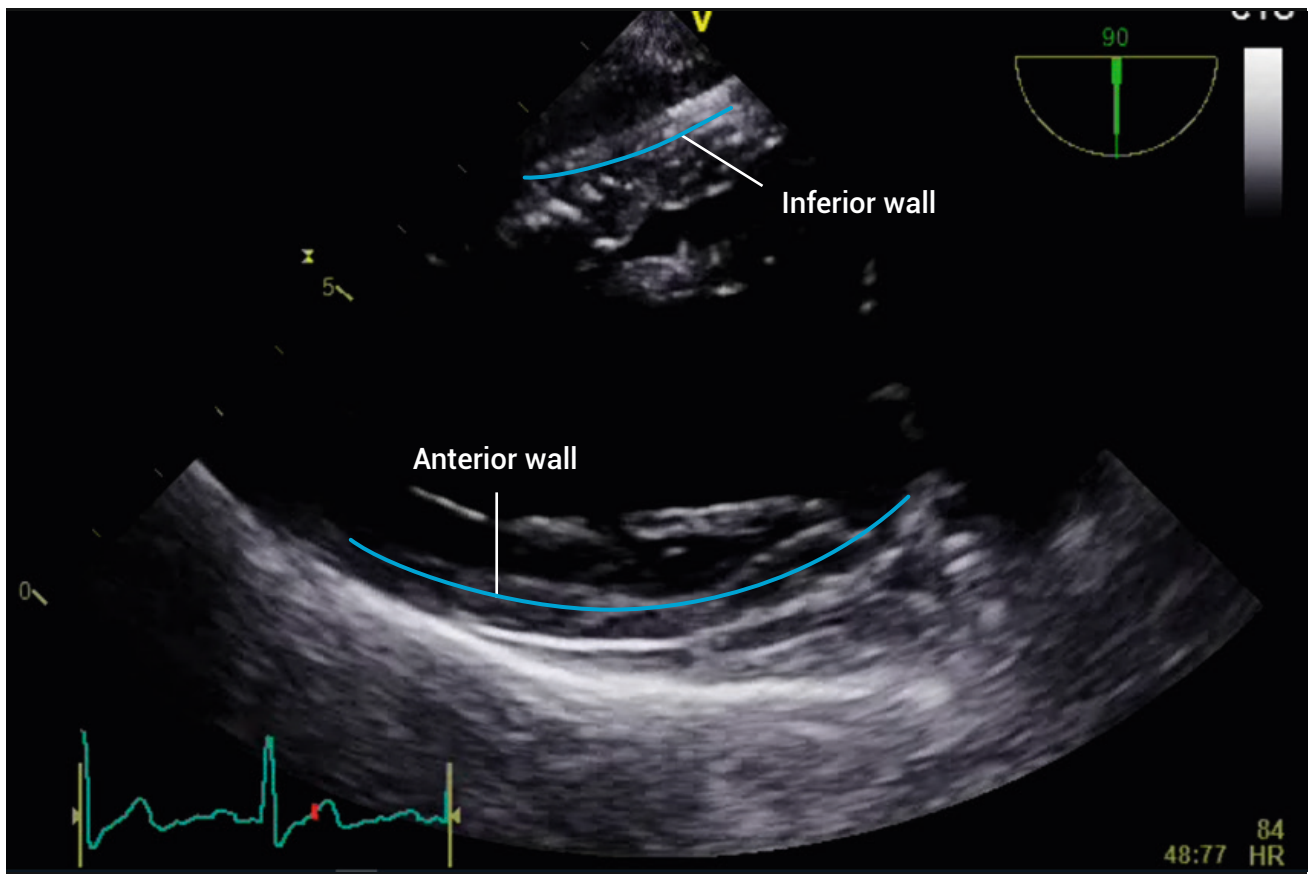


TEE ESSENTIALS

Assessment of the left ventricle: Transgastric two-chamber view

A two-chamber TEE view of the left ventricle can be obtained from the transgastric probe position, using a transducer angle of 80–100°. In this view, the anterior wall (far field) and inferior wall (near field) of the left ventricle can be assessed for regional motion. This view also provides the best images of the chordae tendineae.



Measurements

This view is good for measuring the left ventricular internal diameter, which should be measured at end-diastole (LVIDd) and at end-systole (LVIDs). These measurements are taken at the junction of the basal and mid thirds of the left ventricle. The normal ranges are as follows:

	Male	Female
LVIDd (cm)	4.2–5.8	3.8–5.2
LVIDs (cm)	2.5–4.0	2.2–3.5

Further reading

Lang RM, Badano LP, Mor-Avi V, et al. 2015. Recommendations for cardiac chamber quantification by echocardiography in adults: an update from the American Society of Echocardiography and the European Association of Cardiovascular Imaging. *J Am Soc Echocardiogr.* **28**: 1–39.